



women in the visual and literary arts

WiVLA's Mission: To provide an inspiring forum for women to explore and advance their creative development, to promote their work in the marketplace, and to infuse the community with their spirit of cooperation and invention.

MAY MEMBERSHIP MEETING

Tuesday, May 18, 2010

Please join us to acknowledge the **MAXINE LEO FUND/GOLD KEY AWARD WINNERS.**

The winner of the Literary Award is Melanie Rosin and the winner of the Visual Arts Award is Natalia Vargas. Let's offer our wonderful WiVLA hospitality to these talented young women and their sponsor, Kris Reid, Harris County Education Coordinator. Kris will introduce the award winners who then will share their works with us.

Gathering Time: 6 PM
Meeting Time: 6:15 – 7:15
Museum of Printing History
1324 West Clay Street
Houston, Texas 77019

Join us for dinner following the meeting at Café Express on West Gray

PRESIDENT'S MESSAGE

By Jeanne Haner

Greetings WiVLA Members and Friends!

Happy spring into summer! Hope you had an opportunity to see the Blue Bonnets and wild flowers this year. They were spectacular.

Our April meeting was filled to capacity. Jere Pfister and Madilyn Stein gave delightful and insightful presentations recalling how they used their ECO Fund scholarship money this past year. Thank you, ladies.

Next year we will be hearing from Diana Weeks and Bonnie Blue who were this years winners. Please see WiVLA Fun Facts* for an explanation of the ECO fund scholarship. Also thanks to all who remembered to bring items to the meeting for Betty Street's Haven for abused women. Betty's van was full! After the meeting some of us met at Café Express on West Gray and they were ready for us - we filled the entire back room. Not a seat to be had. It was an exceptional ending to a great evening.

The WiVLA Board of Directors Retreat is on Saturday, May 15, 2010 and will be held at the Live Oak Friends Meeting House in the Heights. We will report our progress in the next

Index of Articles, May 2010

President's Message..... Page 1
Annual WiVLA Exhibit..... Page 2
Member News Page 3
Annual Treasurer Report..... Page 3
Letter from the Editor Page 4
Eco Fund Offers Priceless Gifts Page 4
NCECA 2010 Page 5
"The Creating Life" Page 6
Announcements & Contests..... Page 7
15th Anniversary CD Form Page 7
Calendar of Events Page 8
Deadline for June 2010 Newsletter: May 28, 2010;
submit to newsletter@wivla.org

newsletter. On Sunday, May 16 we have an event at SOMA on Westheimer in Highland Village, 4036 Westheimer, from 6 - 8pm. The store will only be open for our members. Ten percent of any sales that evening will be donated to Betty's Haven. Light refreshments will be served.

On Tuesday, May 18 we have our general meeting which will be presented by this year's recipients of the **Maxine Leo Award**. This annual award is a scholarship presented to two gifted high school seniors – one writer and one artist. It is always inspiring to see what these young women have accomplished so early in life.

Hope to see you at the next meeting. The new WiVLA Member Directory for 2010-2011 will be available there. Thank you.

Thanks from Sue

Jeanne,

The [anniversary] party last night was awesome and so like the things WIVLA used to throw in days gone by. Congratulations and many thanks to the Board and the committee that put it together. It's amazing you got all of the past presidents except Janean to attend.

From the invitations to the food to the Power Point presentation to the commemorative booklets ... wonderful!!!

Thanks to you all, *Sue Liska*

ANNUAL WiVLA PRINT & PHOTOGRAPHY EXHIBITION

WiVLA's Visual Co-Chairs, Jean Caslin and Anna Phillips, submitted the following advance information on the annual membership show at the Museum of Printing History. **Watch for the Prospectus giving complete entry details on the WiVLA website, through e-announcements, and in printed form at the May, June & July meetings!**

On view at

The Museum of Printing History, 1324 West Clay, Houston, Texas 77019
Thursday, August 5 through Saturday, August 28, 2010

The WiVLA exhibition will be held in the Museum's "New Gallery," offering us a dynamic and bright space in which to present our work. The "Underground in H-Town" exhibition is currently installed in the "New Gallery."

CALENDAR:

Saturday, July 17, 2010 – Submissions must be postmarked

Saturday, July 31, 2010 – Work to be delivered to Museum of Printing History, 10am – 5pm

Thursday, August 5, 2010 – Celebrate at the Opening Reception, 6pm – 8pm

Monday, August 30, 2010 – Works to be collected from Museum of Printing History, 10am – 5pm

UPDATE ON WALDO'S COFFEE HOUSE:

The space at Waldo's Coffee House (in the Houston Heights) is more conducive to solo shows than group exhibitions. As a result, there will be no Call for Entries for a group exhibition at this venue. The Visual Co-Chairs are exploring other venues for exhibition opportunities in 2010 - 2012. Please let them know if you have leads on exhibition spaces to consider.

MEMBER NEWS

This column is for members to report their news: getting published, having a show, receiving an award – recognizing any of their work. Please submit your news to share with other WIVLA members.

VISUAL ART CELEBRATIONS

Cary Reeder's painting "Hidden World", **Jo Zider's** sculpture "Urban Relic", **Kay Sarver's** piece "Unforsaken", and **Caroline Z. Marcos's** work "Continuous Prayer" have been selected by Keith Carter for the Visual Arts Alliance 27th Juried Open Exhibition on view from **4/29-5/29** at the Williams Tower Gallery, 2800 Post Oak Blvd. Opening reception **4/29** from 6-8pm.

Nelda Gilliam is exhibiting her most recent paintings "Summer in Dubai" at Koelsch Gallery, 703 Yale, 77007, 713-626-0175. The show **opens 5/6 and continues through 5/28.**

Rona Lesser and Maria Hart are participating in the Artists Alive and Well show, New Directions opening **5/3 -5/28** at the Continental Center, 1600 Smith Street.

Eileen McClellan has a drawing in the 2010 Annual Juried Art

Exhibition at Live Oak Art Center in Columbus, Texas. Opening **5/8** from 4-6pm.

Becky Soria's art will be a part of the Inner Corridor Art Tour at Winters Studios and Gallery3, 2101 Winter St., C3. Opening **5/1**, 3pm – 9pm.

LITERARY CELEBRATIONS

Margo Stutts Toombs has a poem, *The Reunion*, in Love Over 60: An anthology of women's poems, edited by Robin Chapman and Jeri McCormick; Mayapple Press. She also has a haiku poem, *Texas Drawl*, in the 2011 Texas Poetry Calendar.

Jennifer Watson's short story, *Signs of Abnormality*, was published in the Spring 2010 edition of Laurels Magazine. She'll read a selection at the University of St. Thomas, **5/6 at 7:30 pm.**

Jere Pfister's play, "The Art of War," was produced by Scriptwriters/Houston as part of "A Thousand Words," 6 short

plays about how photographs affect marriage, family, relationships and identity, preserve the magnificence of nature and catalog the horrors of war. The show ran **4/16-17 and 4/23-24**, at the Museum of Printing History's theater.

Carolyn Florek received an honorable mention for a poem published in the Austin International Poetry Festival anthology. She also has poems forthcoming in Illya's Honey (Journal of the Dallas Poets Community) and the Texas Poetry Calendar 2011.

Margo Davis will appear in Austin International Poetry Festival anthology and the Texas Poetry Calendar 2011.

Sandi Stromberg's poem "Panhandle Homecoming" has been accepted for the 2011 Texas Poetry Calendar.

ANNUAL TREASURER'S REPORT FOR FISCAL YEAR MARCH 1, 2009 TO FEBRUARY 28, 2010

WIVLA's income for fiscal year March 1, 2009 to February 28, 2010 was \$13,457.61.

The majority, \$7,362.99 was from membership dues. The next largest was from the cash out of \$3,832.04 from the CD. Other income was from Literary and Visual Events, the Maxine Leo Scholarship fund and Randall's.

The expenses for this fiscal year were \$12,088.56. The largest expenses were for the 2010 ECO Fund Awards (\$2,000.00), Newsletter (\$1,550.86), Website updates (\$1,504.83) Maxine Leo Scholarship Awards (\$1,000.00), Museum membership and meeting space (\$950.00), Laptop and software (\$704.63), The Member Teas for 2009 and 2010 combined (\$735.52) The Print show (\$564.50), The Altered Book show (\$392.92), and Speaker dinners and expenses (\$380.09). Other expenses include Literary workshop, storage space rental, domain hosting, business cards, bank fees, post office box rental, office supplies, phone, board retreat, member gifts, name tags, magazine listing, email blasts and literary events.

LETTER FROM THE EDITOR

Dear WiVLA Members,

It is with deep gratitude that I come to the WiVLA board as Newsletter Chair. Since joining WiVLA a year ago, I knew this organization was the right fit for me. Never underestimate the power of word-of-mouth! A staff member at Inprint told me about WiVLA, so I attended a meeting thereafter, and the rest is history.

So far I've learned that women join WiVLA with different goals in mind, whether it is to be inspired, to meet other artists, to mentor, etc. Yet one thing I believe we collectively want as a group is to stay informed, not only of opportunities for personal development and growth in the marketplace, but also to know what other WiVLA members are doing. There's no point of remaining a part of a group of this nature if we don't actively collaborate and network.

That being said, I remind you that this newsletter is a platform for your ideas, a conduit for information exchange, a resource for inspiration, and a general bulletin board for the latest happenings in the art world. The newsletter is your voice. As much as I love to write, I don't enjoy doing all the talking, so I welcome you to contribute to the newsletter more this year than you've ever done before.

Please share with your fellow members how we can maximize the potential of the newsletter to the fullest. I look forward to hearing from you.

Sincerely,

Jennifer Watson
newsletter@wivla.org

ECO FUND AWARD OFFERS TWO ARTISTS PRICELESS GIFTS

By Jennifer Watson

Jere Pfister and Madilyn Stein gave presentations on how they each utilized the \$1,000 cash reward given from the 2009 ECO Fund at the April membership meeting. Jere won the literary lottery pick, while Madilyn was the visual art recipient.

Jere, a second time winner, began her PowerPoint by explaining to WiVLA members that this time around, she wanted to use the funds on something that had a direct impact on her writing. She wrote a memoir titled, *What the River Brought Home* over a period of five years and paid her editor Sara Cortez with the ECO check. Her slideshow was a chronicle of her past, including old photographs of the people and places that made her childhood rich and memorable.

Jere's story focused on memory, loss, and the important women in her life, including her aunts whom she claimed were so quiet, afraid about the past, and obsessed with her sexuality.

"This was a story I had to tell," Jere said to a packed auditorium.

Her research in Covington, Slidell, and New Orleans, LA led her to a treasure trove of family history, which she did an amazing job highlighting in a few minutes. Known for being a vivid storyteller, Jere wove an interesting account of the experiences that shaped her

book. Her journey stopped full circle when she hosted a reading for her cousins back home.

Not deterred from the 16 rejection letters she received after submitting her book to various agents, Jere continues to look for opportunities to share her story, even if it means self-publishing.

She says of the ECO award, "I can't tell you what a gift this was to me. And a trust. I know I used it wisely."

Madilyn used the ECO fund to attend a molding workshop at the Glassell School of Art. Her goal was to learn about how she could use different materials in new ways. Using wire, string, encaustic, and polymers, she built texture in her design and created deep-hued paintings based on a series of photos. The end results were provocative, abstract pieces that quickly sold.

Working on the collection brought such a "constant flow" to Madilyn, she plans to pursue deeper social themes in future pieces. She also hopes to experiment more with three-dimensional surfaces.

Madilyn teaches the skill of painting to novices, but her recollection of the painting process seemed humbling for her. She admits, "I wouldn't have taken the class without the ECO fund."

*WiVLA fun facts

The ECO fund was designed to give WiVLA members an opportunity to pursue art in a way they couldn't otherwise because of fixed or moderate incomes.

To be considered for the ECO award, a WiVLA member must be active for at least two consecutive years and complete a form that indicates what she plans to do with the money should she win.

NCECA 2010 – FROM HOUSTON TO PHILLY, AND BACK “HOME”

The First Return Flight Reflections of a Quilter (Current) and Clay Artist (Past)

by Michele A. Zacks

Some Important Questions:

- | | |
|--|---|
| <ul style="list-style-type: none"> • Does meeting the artist matter? • So, did you “get it”? • Why clay? (Or not) • What am I – medium or concept? | <ul style="list-style-type: none"> • How does place define us? • Why’s it showing at NCECA? • Is there such a thing as too much art? |
|--|---|

Traveling ~1500 miles from Houston to meet Texas ceramic artists. I was talking to, clearly, an exceptional educator-activist and, possibly, interesting clay artist in the Philly Airport Terminal B while waiting for my NCECA travel partner to depart to Dallas. At some point in the conversation, I realized that this lady, Earline M. Green, was the artist who’s strong and unusual clay quilts were on display over 5 years ago at the Houston Center for Contemporary Craft. When each major city in Texas is 150-500 miles from Houston, and the galleries, museums, and clay studios are likewise dispersed within each city, it’s hard to develop a personal sense of community. I met many Texas potters in Philly. I even went to the reception of the Texas Clay Arts Association to “catch up” with Texas potters. But how we define ourselves – whether as “potter”, “sculptor”, or “writer” – influences who we meet and what unites and inspires us as art colleagues. My hope is for groups like WIVLA to tether us.

Seeing it again. Likewise, these questions dominate my revised experience of the vision of Martha Grover, whose work I’d seen previously at 18 Hands Gallery in the Heights. I discover that this gallery neither had her best work on display there, nor did the imagery have the impact until I’d seen her presentation at the NCECA Emerging Artists Session. Her work’s most direct influences – orchids and dance - were obscured, but effectively so, by their conversion into vessel forms. The kind of restraint that success in abstraction requires was evident. And, no doubt, clay was the best possible choice of idea transforming medium. Without NCECA, I would not have realized that this clay artist living in the Pacific Northwest took her inspiration from her upbringing in Maine. I’ll head back to 18 Hands soon for a second look. Go to NCECA. Not because you like the idea of the host city. You may be disappointed. Not because you are a clay artist. You might see too many uninspired vessels. And wonder if clay can become a limitation. Not to network. Some of the best opportunities are ones you might just make on your own, with a little self-reflection. NCECA should make you uncomfortable about many points - your skill, your art business evolution, and your choice of material.

Go to NCECA for the questions.

Links

<http://nceca.net/>

<http://www.earlinegreen.com/>

<http://www.marthagrover.com/>

The Creating Life

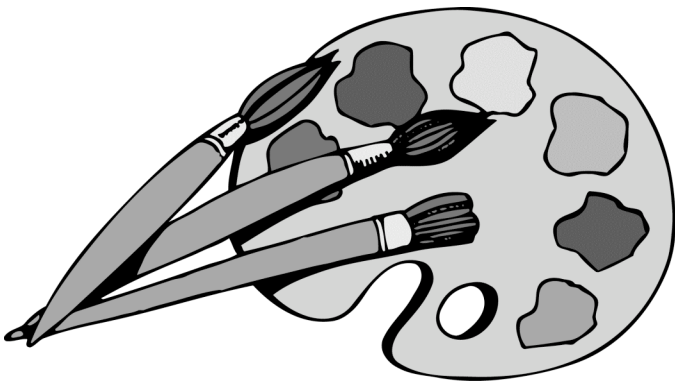
CHOOSING THE RIGHT WORKSHOP

By Robert Genn

"Should I go to an art school, should I take a workshop, or should I just work on my own?" Questions like this come in here every day and they're often tough to answer. Needless to say, I always appreciate a few photos to help me with a properly considered opinion. Sometimes my answer is, "Take a workshop."

But that's when the fun begins. Sometimes it's difficult to find the right one. While students often choose courses that take them in new and uncharted directions, it's also valuable to invest in instructors with a somewhat similar vision to yours. If you don't know her work personally, it's a good idea to thoroughly check out the website. Some instructors are whiz-bangs at plein air, others excel in colour theory or drawing, still others can be counted on for foundation basics. For folks who are not sure what they want--but just feel the urge to get going--a week in a church basement with an enthusiastic pro can really charge up your lithium-ions.

Fact is, many part-time workshop instructors are



simply dynamite at hands-on awakening and enabling. "The supreme art of the teacher," said Albert Einstein, "is to awaken joy." Working artists tend to know a bit about joy.

Here are a few thoughts: First-time students need not fear the prospect of judgment and comparison. Individual boundaries are respected. Most instructors I know are fully loaded with humility and empathy. The greatest teachers are perennial students themselves. "Every professional was first an amateur," said Ralph Waldo Emerson. That quote, widely repeated, helps.

One of the most effective types of workshop is where two or more instructors or mentors alternate between different groups on different days. Students positively buzz with excitement as they vacuum up a bit here and a bit there.

Then there's location. The idea is to get your brush around new places. North American painters lug their stuff over to Brittany and Provence--and European painters hang out with cowboys in New Mexico. Go figure. Notwithstanding volcanic eruptions, the world's your canvas.

These days, many who take workshops are already top-notch painters. New challenges and the benefits of group dynamics are the main reasons these folks join in. Just another reason why workshops are so enriching. Great places to make buddies for life. *Reprinted with permission from the author.*

ANNOUNCEMENTS & CONTESTS

Diana Weeks is making short videos (60 seconds) about creating art of all kinds for Youtube. Contact her at 713 523 2802 for details on how you can be a volunteer movie star. Videos starring WiVLA members **Loueva Smith, Kay Sarver** and past member **Sandra Sherrod** will be part of the Fieldworks Showcase on **5/2, 7:30 pm** at Barnavelders. Tickets on sale for \$7.

Have a friend or family member who wants to learn to paint--and you aren't prepared to take on the project yourself? **Ann Bell** requests that you recommend her for private lessons or 1-day classes. **Ann Bell 281-330-3827** or <http://www.annbell.net/classes.htm>

Piyali S.Dasgupta happily announces Golden Cat Silks will offer silk scarves on a special Mother's Day discount Sat., **5/1 and**

5/8 at Winter Street Studios, Studio #33, 2101 Winter Street.

J-Coby Wayne, Co-Founder of Energy Arts Alliance and fellow Co-Founder, **Kain Sanderson**, presented a performance and participatory demonstration of their original visual and performance art, EnergyFit Tai Chi-Qigong, during the Asian-American Family Services First Annual 5K Walk for Mental Health and Mind-Body Health Awareness at Rice University on **5/2**. This demonstration offered the visual artistry of flowing geometric forms as a means of building the mind-body-energy connection, heightening instincts, achieving greater flexibility, accessing more creativity and preparing one's mind, emotions and body for any form of physical or creative activity.

Susan Ellis, Mary Margaret Carlisle, and Angel Esparza

Ramirez would like to invite you to a poetry reading, **5/15** from 4-6 pm at Heights Books-Libros, 502 E 20th, Ste. D. 713-869-9966. Refreshments will be served.

Exposure Photography Contest: Deadline 5/31
<http://www.artistswanted.org/?ad11>

Lawndale Artist Studio Program 2009-2010: Deadline 5/28/2010.

For more info:
http://lawndaleartcenter.org/proposals/studios_front.html.

All Nations Press Chapbook Contest: Deadline: 5/31 A prize of \$1,000, publication as a chapbook by All Nations Press, and 30 author copies will be given annually for a memoir. Submit a manuscript of up to 40 pages with a \$15 entry fee. www.allnationspress.com.



women in the visual and literary arts

Fifteenth Anniversary
An Evening of Crystal Reflections
March 27, 2010

To purchase a commemorative CD for \$5.00,
please fill in your name and address
and circle whether you would like a PC or MAC version

Name _____

Address _____

e-mail address _____ phone _____

your copy will be available at the May general meeting

WiVLA BOARD MEMBERS

Jeanne Haner
wivla.jhaner@gmail.com
President

Jean Caslin
jeancaslin@gmail.com
Visual Co-Chair

Cary Reeder
cs_reeder@sbcglobal.net
Membership

Terry Tomkins-Walsh
tomkinswalsh@uh.edu
Historian

Lane Devereux
lanedev@comcast.net
Vice President

Anna Phillips
freehandart@btinternet.com
Visual Co-Chair

Jennifer Watson
wivlaeditor@yahoo.com
Newsletter

Madilyn Stein
madsteinart@gmail.com
At-large

Connie Buchanan
ccbuchanan@sbcglobal.net
Secretary

Corry Austin
corry@sbcglobal.net
Literary Co-Chair

Diane Griffin Gregory
dianeggregory@gmail.com
Programs

Diana Meade
dianameade@comcast.net
Treasurer

Elizabeth Earle
eaearle@hotmail.com
Literary Co-Chair

Rebecca Kveton
gigglesrk@aol.com
Public Relations

WIVLA – CALENDAR OF UPCOMING EVENTS

May 15: Board Retreat, Live Oaks
Friends Meeting House

May 16: "Dress for Success"
Charity Event at SOMA, 4036
Westheimer. 10% of Proceeds
donated to Betty's Haven

May 18: Member Meeting:
Maxine Leo Fund/Gold Key
Award Winners

August 5-28: Annual WiVLA Print
Show, Museum of Printing History

WiVLA meets the **third Tuesday of every month** excluding December at The Museum of Printing History, 1324 W Clay Houston 77019

Women in the Visual and Literary Arts

P.O. Box 130406
Houston, Texas 77219-0406
<http://www.wivla.org>